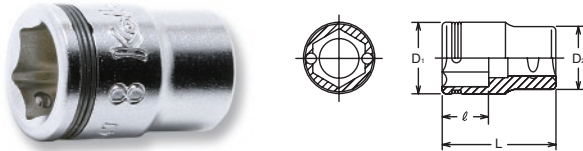


Koken® Information

Nut Grip® *New Addition*

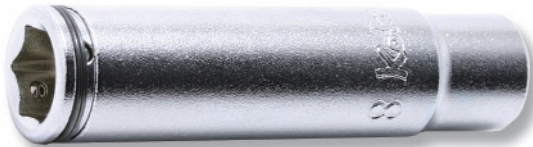
2450MS Nut Grip® Short socket 1/4"



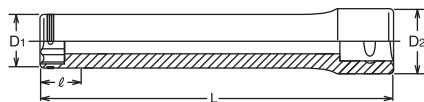
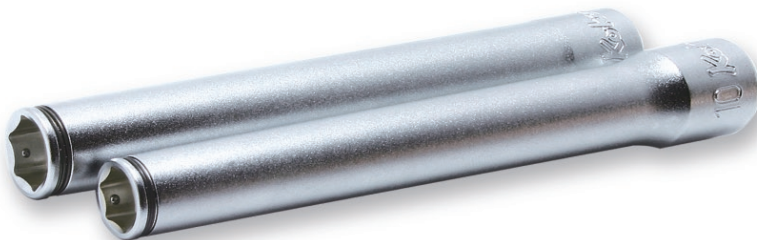
RS2450MS/6



2350M Nut Grip® Deep socket 1/4"



3350M(L120) Nut Grip® Extra Deep socket 3/8"



[EXTRA DEEP SOCKET]

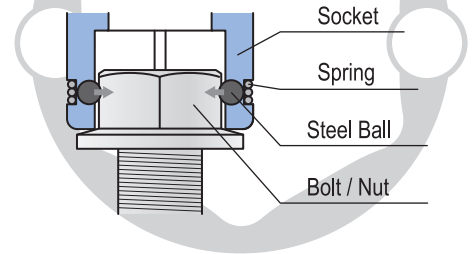


BUMPER BOLT

DOOR HINGE

Nut Grip®

Twin balls at the 6-point opening holds bolt/nut tightly for safe and reliable work.



2450MS (mm)	D ₁ (mm)	D ₂ (mm)	ℓ (mm)	L (mm)	(g)	(pcs)
7	11.3	11.2	4	18	8	10
8	12.3	11.2	5	18	9	10
10	14.3	12.9	6	19	13	10
12	17.4	16	7	20	22	10
13	18	16.4	8	20	22	10
14	19.9	18	8.5	22	31	10

RS2450MS/6 : 6 Pieces Set (g)=120g

2450MS (Rail:150mm) 7, 8, 10, 12, 13, 14

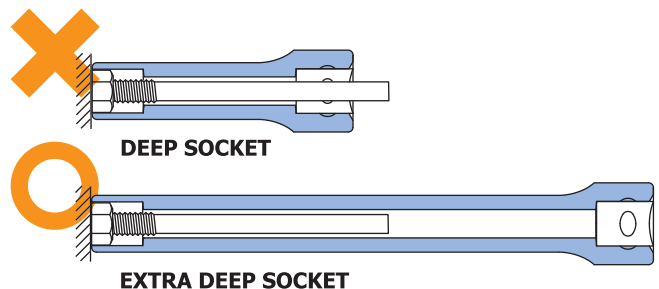
2350M (mm)	D ₁ (mm)	D ₂ (mm)	ℓ (mm)	L (mm)	(g)	(pcs)
8	12.3	11.2	5	50	30	10
10	14.2	12.9	6	50	35	10
12	17.3	16	7	50	55	10
14	19.9	18	8.5	50	70	10

3350M(L120) (mm)		D ₁ (mm)	D ₂ (mm)	ℓ (mm)	L (mm)
10	3/8" 8.5mm	14.5	17.3	6	120
12		16.8	17.3	7	120

3350M/2-L120 : 2 Pieces Set

Sockets 3350M(L120) Extra Deep Sockets **Nut Grip®** 10, 12

PLASTIC BAG



Extra deep socket can be used to fasten or loosen longer bolts such as Bumper bolt and Door hinge etc.