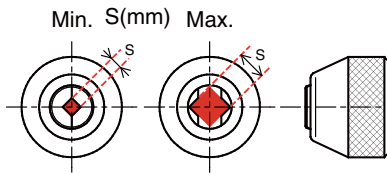


#### 3131A 3/8" Adjustable Tap Holder



3131A	□	S(mm)		L (mm)	⚖ (g)	📦 (pcs.)
		Min.	Max.			
New 1	<span style="border: 1px solid black; padding: 0 2px;">3/8"</span>	2.0	5.0	42	85	5
New 2	<span style="border: 1px solid black; padding: 0 2px;">3/8"</span>	4.5	8.0	48	140	5



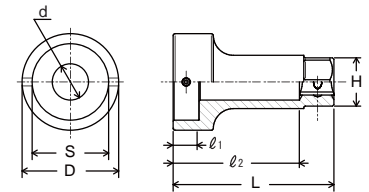
Tap is not included.

#### 3132 3/8" Die Holder

#### 4132 1/2"

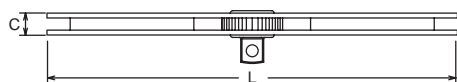


	□	S (mm)	D (mm)	d (mm)	ℓ <sub>1</sub> (mm)	ℓ <sub>2</sub> (mm)	H (mm)	L (mm)	⚖ (g)	📦 (pcs.)
New 3132-20	<span style="border: 1px solid black; padding: 0 2px;">3/8"</span>	20	28	8	7	46	17	60	130	5
New 4132-25		25	34	14	9	42	22	60	170	2
New 4132-38	<span style="border: 1px solid black; padding: 0 2px;">1/2"</span>	38	48	18	13	62	24	80	315	2
New 4132-50		50	60	30	16	80	27	105	740	2



Die is not included.

#### 160K 3/8" 1/2" Reversible Ratchet



	□	C (mm)	L (mm)	⚖ (g)	📦 (pcs.)
160K	<span style="border: 1px solid black; padding: 0 2px;">3/8"</span>	10	220	130	1
New 160K-1/2	<span style="border: 1px solid black; padding: 0 2px;">1/2"</span>	10	220	135	1