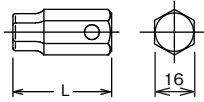


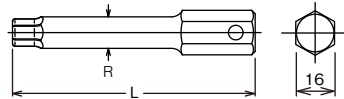


107-16 Bit series

107-16 Bits for Inhex screws



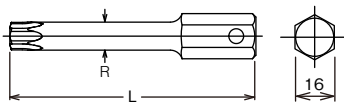
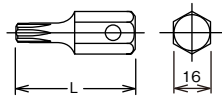
107-16 (inch)	L (mm)	(g)	(pcs.)
1/2	40	56	10
9/16	40	60	10
5/8	40	69	10
3/4	40	80	10



107-16 (mm)	L (mm)	(g)	(pcs.)
10	40	46	10
12	40	52	10
13	40	56	10
14	40	60	10
16	40	69	10
17	40	73	10
18	40	78	10
19	40	80	10
22	40	97	10

107-16(L100) (mm)	L (mm)	R (mm)	(g)	(pcs.)
10	100	13	122	10
12	100	15	146	10
14	100	-	166	10
17	100	-	193	10
19	100	-	232	10
22	100	-	254	10

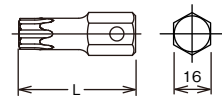
107-16(T) TORX® Bits



107-16 (T)	L (mm)	(g)	(pcs.)
T55	50	57	10
T60	50	64	10
T70	50	73	10

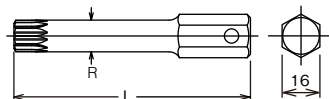
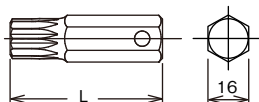
107-16(L100) (T)	L (mm)	R (mm)	(g)	(pcs.)
T55	100	11.4	108	10
T60	100	13.4	130	10
T70	100	15.7	159	10

107-16(IP) TORXPLUS® Bits



107-16 (IP)	L (mm)	(g)	(pcs.)
55IP	50	57	10
60IP	50	64	10
70IP	50	73	10

107-16(XZN) Bits XZN

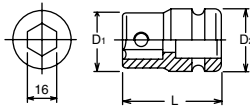


107-16 (XZN)	L (mm)	(g)	(pcs.)
M14	60	83	10
M16	60	93	10
M18	60	103	10

107-16(L100) (XZN)	L (mm)	R (mm)	(g)	(pcs.)
M14	100	13.4	131	10
M16	100	15.8	161	10
M18	100	17.1	177	10

107-16 Bit series, Bit Holder

○ 14106 Bit Holder

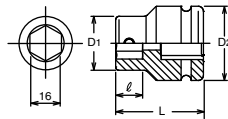


	D ₁ (mm)	D ₂ (mm)	L (mm)			
14106	28	30	43	160	10	*1

*1 C-Ring=1402C, Pin/O-Ring=1402A/B

Replacement Screw : M6x8, ●3mm

○ 16106 Bit Holder

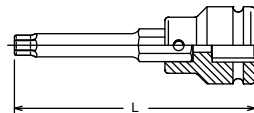
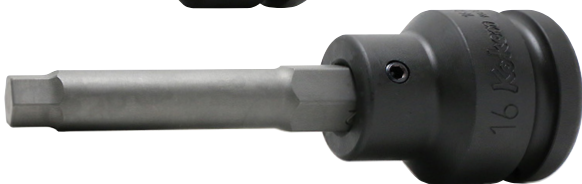
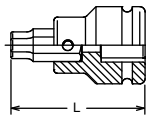


	D ₁ (mm)	D ₂ (mm)	ℓ (mm)	L (mm)			
16106	32	44	16	52	370	2	*1

*1 C-Ring=1600C, Pin/O-Ring=1601A/B

Replacement Screw : M6x10, ●3mm

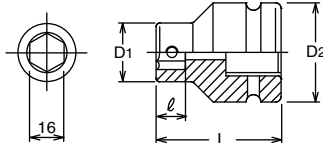
● 16106-16 Bit Holder complete with Bit, Inhex



Length

16106	+	107.16	⇒	76 mm
16106	+	107.16(T)	⇒	86 mm
16106	+	107.16(IP)	⇒	86 mm
16106	+	107.16(XZN)	⇒	96 mm
16106	+	107.16(L100)	⇒	136 mm

○ 18106 Bit Holder

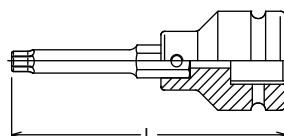
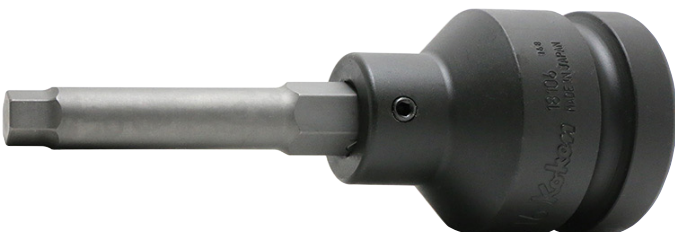
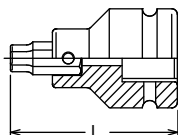


	D ₁ (mm)	D ₂ (mm)	ℓ (mm)	L (mm)			
18106	32	54	16	68	640	2	*1

*1 C-Ring=1801C, Pin/O-Ring=1801A/B

Replacement Screw : M6x10, ●3mm

● 18106-16 Bit Holder complete with Bit, Inhex



Length

18106	+	107.16	⇒	92 mm
18106	+	107.16(T)	⇒	102 mm
18106	+	107.16(IP)	⇒	102 mm
18106	+	107.16(XZN)	⇒	112 mm
18106	+	107.16(L100)	⇒	152 mm